

NATIONAL BROKERS LIMITED

<http://nationalbrokersbd.com/>

Tea Auctioneers since 1948

TEA MARKET REPORT – Sale 34 held on Monday 26th December, 2022

CTC LEAF: 51,752 packages of Current Season teas on offer met with a fairly strong demand.

BROKENS: A handful of good Brokens on offer met with a strong demand and were generally firm. Mediums met with quite a fair demand but were mostly easier shedding by upto Tk.5/- over last with some withdrawals. Plain varieties met with less demand and prices were easier with more withdrawals. BLF teas elicited less interest and were generally easier with a lot of withdrawals.

FANNINGS: A few best Fannings on offer met with a fairly strong demand but at lower rates following quality. Good Fannings met with a fair demand and were generally steady to slightly easier. Medium types met with fair interest but again eased in price. Plain teas witnessed less demand and were easier with fair withdrawals. BLF teas elicited less interest and were generally easier with a lot of withdrawals.

CTC DUST: 13,241 packages of Current Season teas on offer met with fair demand. Good liquoring Dusts attracted good demand but prices were easier by Tk.5/- to Tk.10/-. CDs were in fair demand and sold Tk. 5/- to Tk.8/- below last levels. Mediums met with fair demand and were slightly dearer closely following quality. Plain and BLF Dusts saw only some demand with fair withdrawals. Blenders were fairly active with some interest from the Loose tea buyers.

COMMENTS: There was a fair drop in quality in this week's offerings particularly in the Broken varieties. However, there was fair competition from Blenders for the brightest varieties which sold readily in line with quality. Loose tea buyers were less active.

Dusts sold fairly well with some withdrawals.

Our catalogue: (Sale 34) Avg: Tk 217.16, Sold 74.5 % & (Sale 33) Avg: Tk 223.85, sold 74.6 %.

Quotations – This Week – (In Taka)

Brokens	This Week	Last Week	Fannings	This week	Last Week	Dust	This week	Last Week
Large	215-225	220-230 nom	Best	230-240	240-250	PD	200-277	190-266
Medium	210-222	210-225	Good	215-225	220-230	RD	125-331	105-350
Small	215-225	220-230	Medium	205-212	208-218	D	141-330	150-338
Plain	170-190	175-190	Plain	180-190	185-190	CD	153-330	160-330
BLF	125-145	125-150	BLF	125-145	125-150	BLF	130-178	130-208

Exchange Rates 26th December, 2022 Sterling Pound: Tk. 121.9070 dollar: Tk. 101.0000

Top Prices – This Week

Category – CTC	Garden	Grade	Package	Price	Buyer(s)
Brokens	Ghazipore	GBOP	20	268/-	Rajdhani
Fannings	* Brindabon	DMPF	20	258/-	AKT/HRC
Clonal Brokens	Kedarpur	BOP(BT1)	10	296/-	Jamuna
Clonal Fannings	* Madhupur	PF(TV1)	10	283/-	AKT
PD/RD (Incl Clone)	* Balisera	RD	10	331/-	AKT
D (Incl Clone)	* Madhupur	D(BT1)	20	330/-	Shawon/Meghna
CD (Incl Clone)	* Madhupur	CD(BT1)	10	330/-	Shawon
Green Tea	* Kazi & Kazi	Soumee	10	600/-	Meghna
Oolong	* M.M. Tea Estates Ltd	Oolong	6	1950/-	Ankur
Yellow	* M.M. Tea Estates Ltd	Yellow	3	1950/-	Ankur

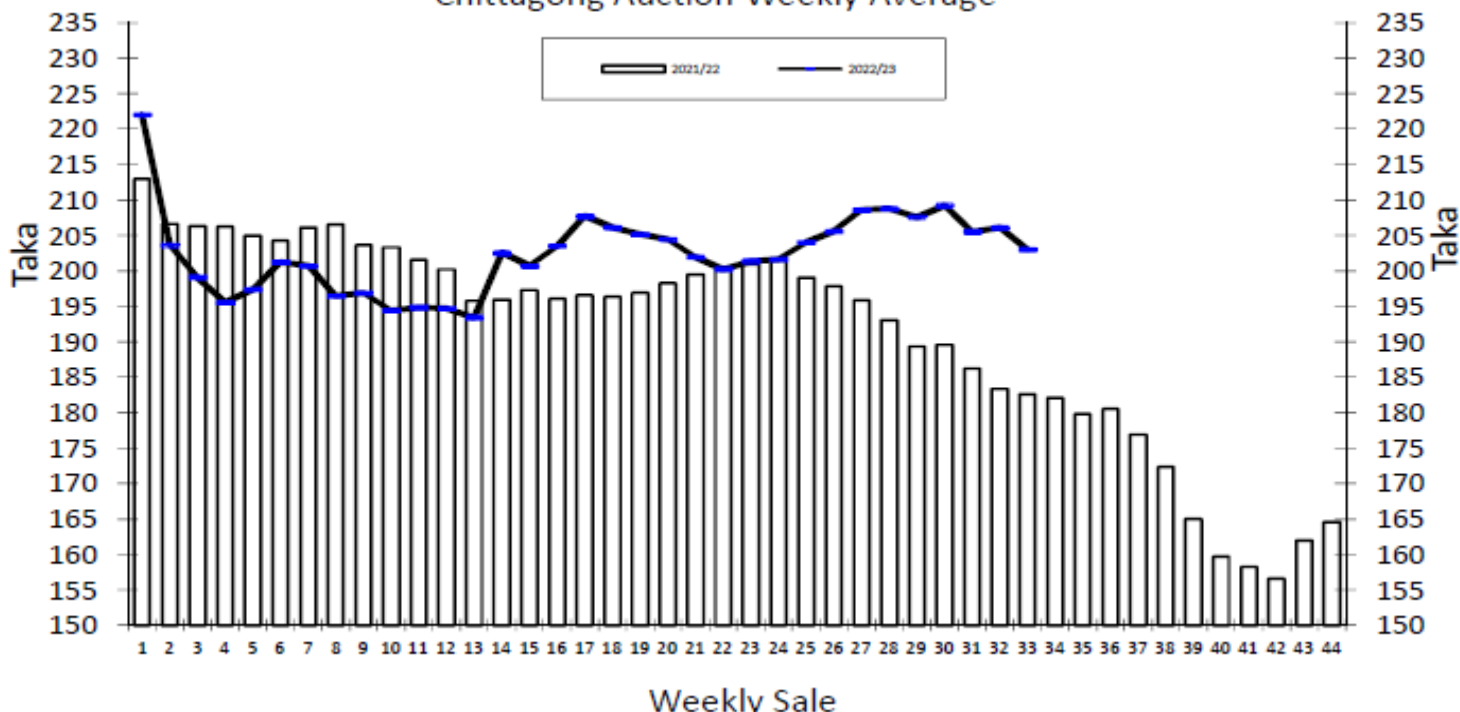
* Above price(s) realised in our catalogue

Offerings

Type	This Sale (Sale 34)				Next Sale (Sale 35)			
	Season 2022-23		Season 2021-22		Season 2022-23		Season 2021-22	
	Packages	Qty/Kg	Packages	Qty/Kg	Packages	Qty/Kg	Packages	Qty/Kg
Leaf	51,752	2,582,425	51,210	2,807,332	61,310	3,059,369	47,021	2,577,691
Dust	13,241	660,726	10,519	568,627	12,358	616,664	10,345	559,655
Total	64,993	3,243,151	61,729	3,375,959	73,668	3,676,033	57,366	3,137,347

Chittagong Auction Average: Sale 33
Season 2022/23: Tk. 203.01 & Season 2021/22: Tk. 182.59

Chittagong Auction Weekly Average



Category	For the Sale						Up-to-Date Sale					
	Season 2021/22		Season 2022/23		Season 2021/22		Season 2022/23		(+/-) Season 2021/22			
	Qty. (Kg)	Taka	Qty. (Kg)	Taka	Qty. (Kg)	(%)	Taka	Qty. (Kg)	(%)	Taka	Qty. (Kg)	Taka
CTC LEAF	1,673,097.0	174.74	1,833,140.0	197.21	54,768,043.6	78.3%	193.84	52,103,173.4	79.0%	196.93	-2,664,870.2	3.09
CTC DUST	485,741.7	209.61	446,253.2	226.82	14,858,109.6	21.3%	211.42	13,817,525.4	20.9%	222.54	-1,040,584.2	11.12
Sub-Total	2,158,838.7	182.59	2,279,393.2	203.01	69,626,153.2	99.6%	197.59	65,920,698.8	99.9%	202.30	-3,705,454.4	4.71
Orthodox	0.0	0.00	0.0	0.00	26,105.0	0.0%	104.44	0.0	0.0%	0.00	-26,105.0	-104.44
Total	2,158,838.7	182.59	2,279,393.2	203.01	69,652,258.2	99.6%	197.56	65,920,698.8	99.9%	202.30	-3,731,559.4	4.74
Green Tea	106.0	1,459.58	11,517.5	557.19	10,734.4	0.0%	494.56	14,433.5	0.0%	553.37	3,699.1	58.81
Oolong Tea	0.0	0.00	3.0	1,883.33	0.0	0.0%	0.00	21.5	0.0%	1,875.58	21.5	1,875.58
Yellow Tea	0.0	0.00	0.0	0.00	20.0	0.0%	1,400.00	2.5	0.0%	2,600.00	-17.5	1,200.00
Total	2,158,944.7	182.65	2,290,913.7	204.79	69,663,012.6	99.6%	197.60	65,935,156.3	99.9%	202.38	-3,727,856.3	4.77
Other (s)	2,952.0	95.00	0.0	0.00	253,843.2	0.4%	162.94	43,126.3	0.1%	129.18	-210,716.9	-33.76
G.Total	2,161,896.7	182.53	2,290,913.7	204.79	69,916,855.8	100.0%	197.48	65,978,282.6	100%	202.33	-3,938,573.2	4.85

Buyer	Buyer Purchase Analysis						Up-to-Date Sale					
	For the Sale		Season 2022/23		Season 2021/22		Season 2022/23		(+/-) Season 2021/22			
	Qty. (Kg)	Taka	Qty. (Kg)	Taka	Qty. (Kg)	(%)	Taka	Qty. (Kg)	(%)	Taka	Qty. (Kg)	Taka
Export	0.0	0.00	0.0	0.00	24,143.6	0.03%	199.24	18,727.3	0.03%	218.44	-5,416.3	19.20
Internal	2,161,896.7	182.53	2,290,913.7	204.79	69,892,712.2	99.97%	197.48	65,959,555.3	99.97%	202.32	-3,933,156.9	4.85
Grand Total	2,161,896.7	182.53	2,290,913.7	204.79	69,916,855.8	100.00%	197.48	65,978,282.6	100.0%	202.33	-3,938,573.2	4.85

Crop of Major Tea Producing & Exporting Countries

Country	Month	2020	2021	2022	(+/-) 2021	2020	2021	2022	(+/-) 2021
Bangladesh *	November	10.50	10.24	10.84	0.60	79.43	89.57	86.05	-3.52
Sri Lanka	November	24.8	20.2	20.2	0.0	250.2	279.1	231.9	-47.2
North India	October	155.5	171.6	141.9	-29.7	854.3	953.1	950.9	-2.2
South India	October	20.2	21.4	18.8	-2.6	180.2	203.3	194.4	-8.9
All India	October	175.7	193.0	160.7	-32.3	1034.5	1156.4	1145.3	-11.1
Kenya	August	38.5	33.6	35.9	2.3	376.8	342.4	340.1	-2.3

* Source: Bangladesh Tea Board's Monthly Statistical Bulletin

General + Other Market(s) This/Last Week

KOLKATA SALE 51- 21st /22nd & 23rd DECEMBER, 2022

CTC: There was fair demand for better Assams which sold at irregularly easier levels. There was good demand for the medium category Assams which sold at steady rates. Good and medium Doosars were irregular around last levels whilst plainer/BLF sorts were irregularly easier.

Tea Category USC/KG	Brokens	Fannings	Dusts
BEST ASSAMS	338-399	314-362	338-399
GOOD ASSAMS	266-302	254-290	266-314
MED ASSAMS	181-217	181-217	193-229
BEST DOOARS	266-302	266-290	
GOOD DOOARS	217-254	217-254	
MED/PLN DOOARS	157-205	157-205	

SILIGURI SALE 51- 21ST DECEMBER, 2022

Fair general demand. Levels across all segments eased irregularly following drop in quality. Buying Pattern: Internal- Main stay. Blenders – Operated.

CTC/Quotations (USC/KG)	Brokens(USC/kg)	Fannings(USC/kg)	Dust (USC/kg)
GOOD / BEST	242-362	248-362	229-296
MEDIUM / BETTER MEDIUM	175-236	175-242	169-223
COMMON / BLF	127-169	133-169	139-163

COONOOR SALE 51- 23RD DECEMBER, 2022

DEMAND: -Good general demand. **MARKET:** - The total CTC leaf teas sold this week was **88.83 % (668420kgs)** of the total offering of **752435.06Kgs**. Up-country buyers and local traders were fairly active. Exporters were fairly active on the medium and plainer teas on offer.

CTC Leaf(USC/KG)	Best	Good	Better Medium	Medium	Plain
Larger Brokens	165-194	139-146	133-138	121-132	115-120
Medium Brokens	169-301	145-167	139-144	130-138	118-129
Smaller Brokens	179-222	146-170	139-145	133-138	122-132
Fannings	184-216	152-170	140-151	133-139	120-132

MOMBASA SALE 51- 19TH /20TH & 21ST DECEMBER, 2022

In this last sale of the year, there was good general demand but at irregularly easier levels for the 232,540 packages (15,496,597.00 kilos) available with 25.46% remaining unsold.

CTC QUOTATIONS	BP1 – USC	PF1 – USC	PD – USC	D1 - USC
Best	270 – 452	280 – 317	270 – 310	270 – 312
Good	268 – 298	277 – 310	270 – 283	270 – 283
Good Medium	268 – 282	275 – 288	270 – 276	270 – 280
Medium (KTDA)	250 – 265	244 – 278	258 – 277	245 – 276
Medium (Plantations)	168 – 293	180 – 242	200 – 231	190 – 232
Lower Medium	132 – 210	133 – 212	140 – 220	144 – 214
Plainer	106 – 155	112 – 186	115 – 166	115 – 174

WE WISH YOU A HAPPY & PROSPEROUS NEW YEAR